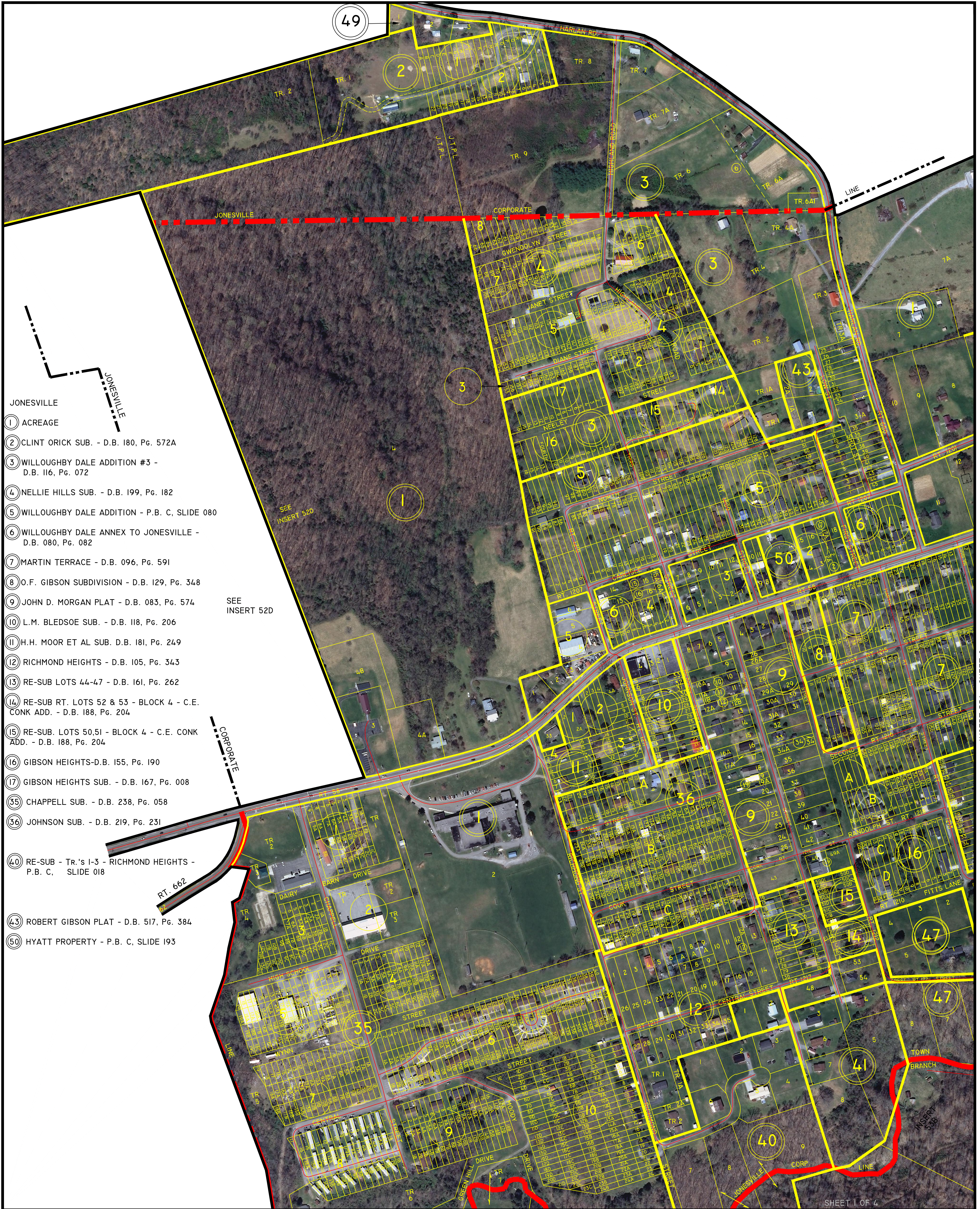


LEE COUNTY, VIRGINIA

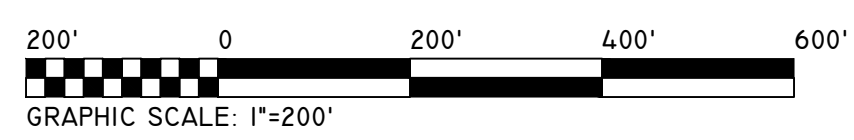


- JONESVILLE
- ① ACREAGE
 - ② CLINT ORICK SUB. - D.B. 180, Pg. 572A
 - ③ WILLOUGHBY DALE ADDITION #3 - D.B. 116, Pg. 072
 - ④ NELLIE HILLS SUB. - D.B. 199, Pg. 182
 - ⑤ WILLOUGHBY DALE ADDITION - P.B. C, SLIDE 080
 - ⑥ WILLOUGHBY DALE ANNEX TO JONESVILLE - D.B. 080, Pg. 082
 - ⑦ MARTIN TERRACE - D.B. 096, Pg. 591
 - ⑧ O.F. GIBSON SUBDIVISION - D.B. 129, Pg. 348
 - ⑨ JOHN D. MORGAN PLAT - D.B. 083, Pg. 574
 - ⑩ L.M. BLEDSOE SUB. - D.B. 118, Pg. 206
 - ⑪ H.H. MOOR ET AL SUB. D.B. 181, Pg. 249
 - ⑫ RICHMOND HEIGHTS - D.B. 105, Pg. 343
 - ⑬ RE-SUB LOTS 44-47 - D.B. 161, Pg. 262
 - ⑭ RE-SUB RT. LOTS 52 & 53 - BLOCK 4 - C.E. CONK ADD. - D.B. 188, Pg. 204
 - ⑮ RE-SUB. LOTS 50,51 - BLOCK 4 - C.E. CONK ADD. - D.B. 188, Pg. 204
 - ⑯ GIBSON HEIGHTS-D.B. 155, Pg. 190
 - ⑰ GIBSON HEIGHTS SUB. - D.B. 167, Pg. 008
 - ⑳ CHAPPELL SUB. - D.B. 238, Pg. 058
 - ㉑ JOHNSON SUB. - D.B. 219, Pg. 231
 - ㉒ RE-SUB - Tr.'s 1-3 - RICHMOND HEIGHTS - P.B. C, SLIDE 018
 - ㉓ ROBERT GIBSON PLAT - D.B. 517, Pg. 384
 - ㉔ HYATT PROPERTY - P.B. C, SLIDE 193

SEE INSERT 52D

CORPORATE

RT. 662

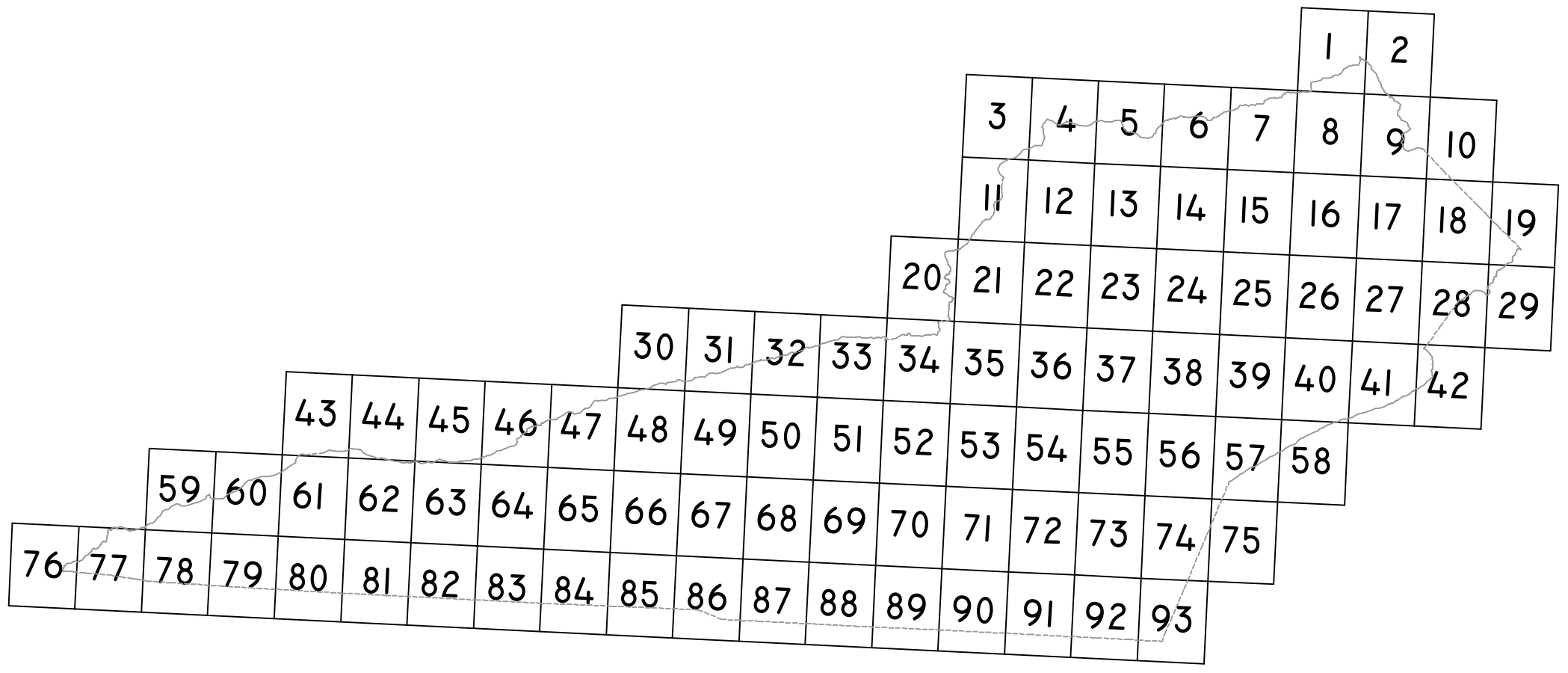


JONESVILLE TOWN
JONESVILLE MAGISTERIAL
DISTRICT

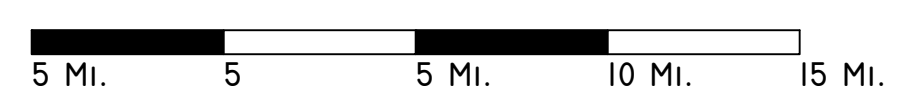
SECTION 53
INSERT A1

DISCLAIMER:

THE INFORMATION SHOWN HEREON IS NOT BASED ON A CURRENT FIELD SURVEY. IT WAS COMPILED FROM PRIOR COUNTY TAX MAPS, SUBDIVISION PLATS, PARTITION PLATS, AERIAL PHOTOGRAPHY AND OTHER SOURCES. PLEASE NOTIFY THE LEE COUNTY COMMISSIONER OF THE REVENUE OFFICE IF ANY ERRORS OR OMISSIONS OCCUR. LEE COUNTY WILL NOT BE LIABLE FOR ANY DAMAGES, THAT MAY ARISE FROM THE USE OF THIS MAP. PROPERTY LINES AS SHOWN ARE SUBJECT TO A CURRENT FIELD SURVEY BY A CERTIFIED VIRGINIA LAND SURVEYOR. AERIAL IMAGERY ©2011 COMMONWEALTH OF VIRGINIA.



VICINITY MAP: 1"= 5 MILES



INSERT 53A - SHEET 2

SHEET 1 OF 4