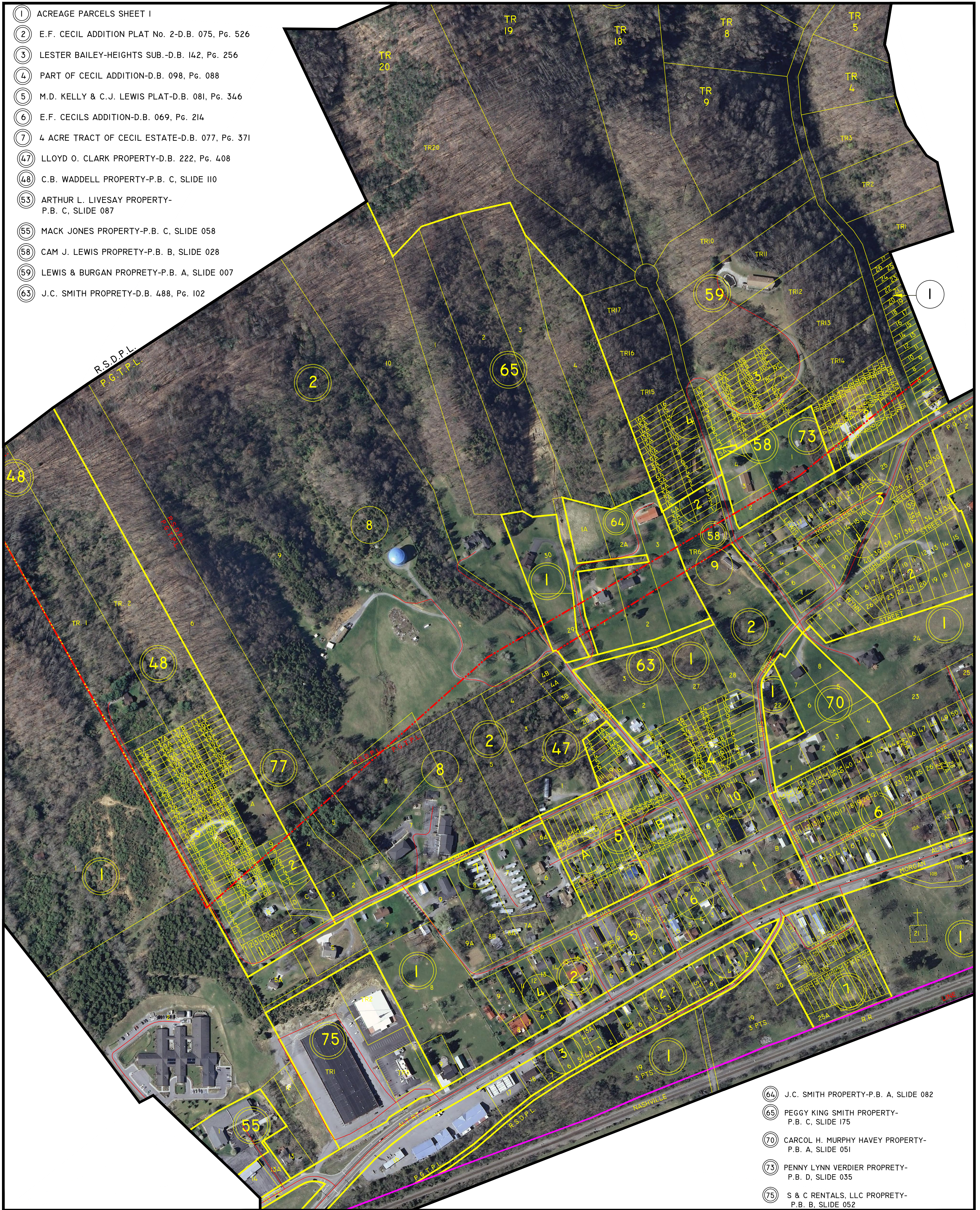
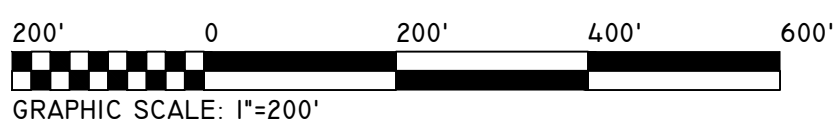


- ① ACREAGE PARCELS SHEET I
- ② E.F. CECIL ADDITION PLAT No. 2-D.B. 075, Pg. 526
- ③ LESTER BAILEY-HEIGHTS SUB.-D.B. 142, Pg. 256
- ④ PART OF CECIL ADDITION-D.B. 098, Pg. 088
- ⑤ M.D. KELLY & C.J. LEWIS PLAT-D.B. 081, Pg. 346
- ⑥ E.F. CECILS ADDITION-D.B. 069, Pg. 214
- ⑦ 4 ACRE TRACT OF CECIL ESTATE-D.B. 077, Pg. 371
- ④⑦ LLOYD O. CLARK PROPERTY-D.B. 222, Pg. 408
- ④⑧ C.B. WADDELL PROPERTY-P.B. C, SLIDE 110
- ⑤③ ARTHUR L. LIVESAY PROPERTY-P.B. C, SLIDE 087
- ⑤⑤ MACK JONES PROPERTY-P.B. C, SLIDE 058
- ⑤⑧ CAM J. LEWIS PROPRETY-P.B. B, SLIDE 028
- ⑤⑨ LEWIS & BURGAN PROPRETY-P.B. A, SLIDE 007
- ⑥③ J.C. SMITH PROPRETY-D.B. 488, Pg. 102



- ⑥④ J.C. SMITH PROPERTY-P.B. A, SLIDE 082
- ⑥⑤ PEGGY KING SMITH PROPERTY-P.B. C, SLIDE 175
- ⑦⑩ CARCOL H. MURPHY HAVEY PROPERTY-P.B. A, SLIDE 051
- ⑦③ PENNY LYNN VERDIER PROPERTY-P.B. D, SLIDE 035
- ⑦⑤ S & C RENTALS, LLC PROPERTY-P.B. B, SLIDE 052

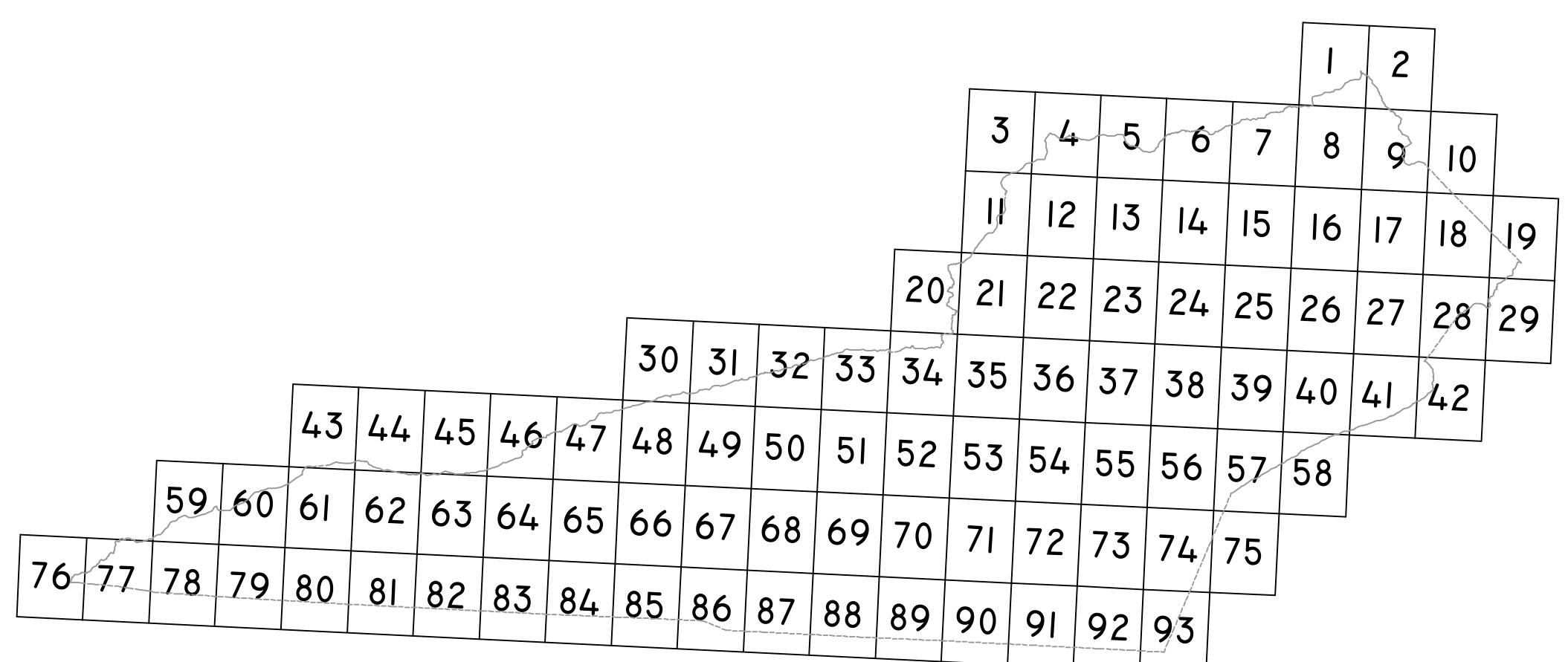


ROCKY STATION
MAGISTERIAL
DISTRICT

SECTION 23
INSERT EI

DISCLAIMER:

THE INFORMATION SHOWN HEREON IS NOT BASED ON A CURRENT FIELD SURVEY. IT WAS COMPILED FROM PRIOR COUNTY TAX MAPS, SUBDIVISION PLATS, PARTITION PLATS, AERIAL PHOTOGRAPHY AND OTHER SOURCES. PLEASE NOTIFY THE LEE COUNTY COMMISSIONER OF THE REVENUE OFFICE IF ANY ERRORS OR OMISSIONS OCCUR. LEE COUNTY WILL NOT BE LIABLE FOR ANY DAMAGES THAT MAY ARISE FROM THE USE OF THIS MAP. PROPERTY LINES AS SHOWN ARE SUBJECT TO A CURRENT FIELD SURVEY BY A CERTIFIED VIRGINIA LAND SURVEYOR. AERIAL IMAGERY © 2011 COMMONWEALTH OF VIRGINIA.



VICINITY MAP: 1"= 5 MILES

