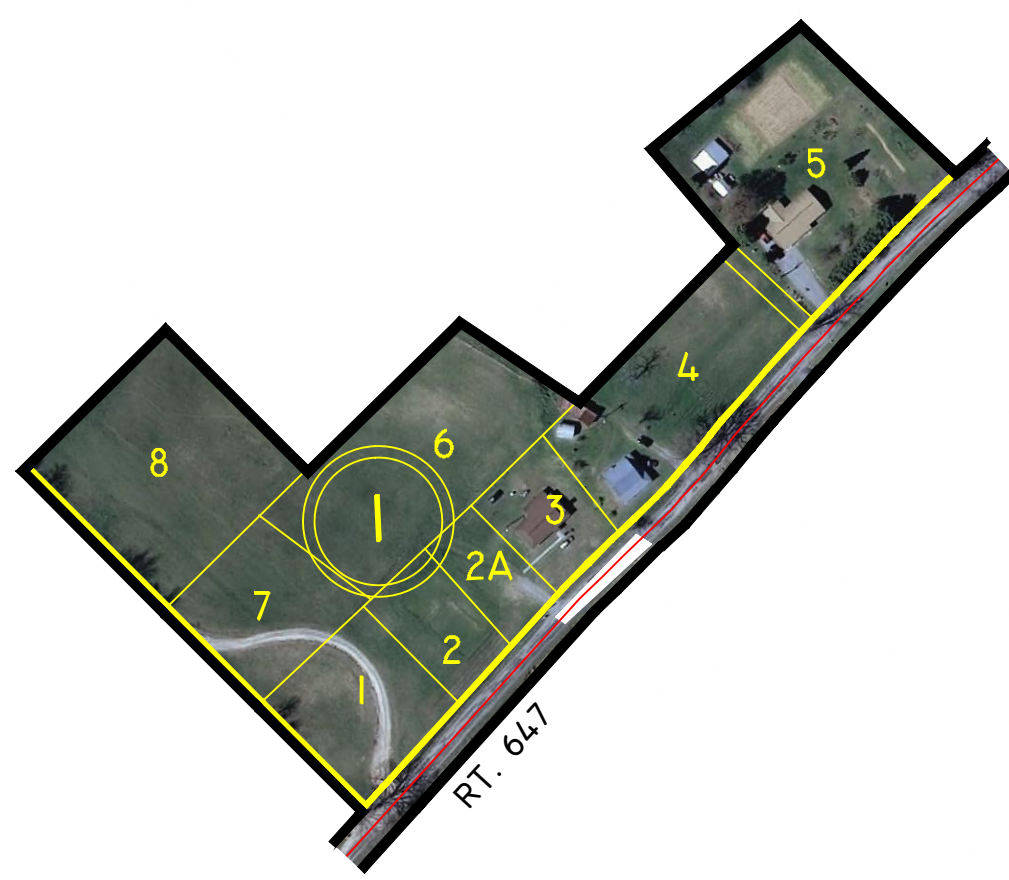
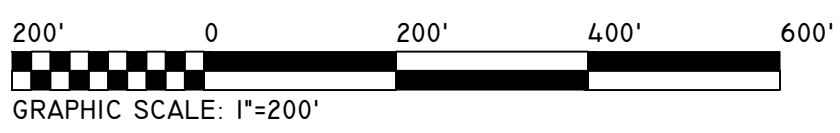


LEE COUNTY, VIRGINIA



① WILLIAMS PROPERTY-P.B. A, SLIDE 122
 P.B. A, SLIDE 174
 DEED BOOK 311, PAGE 374
 DEED BOOK 257, PAGE 240
 DEED BOOK 257, PAGE 205

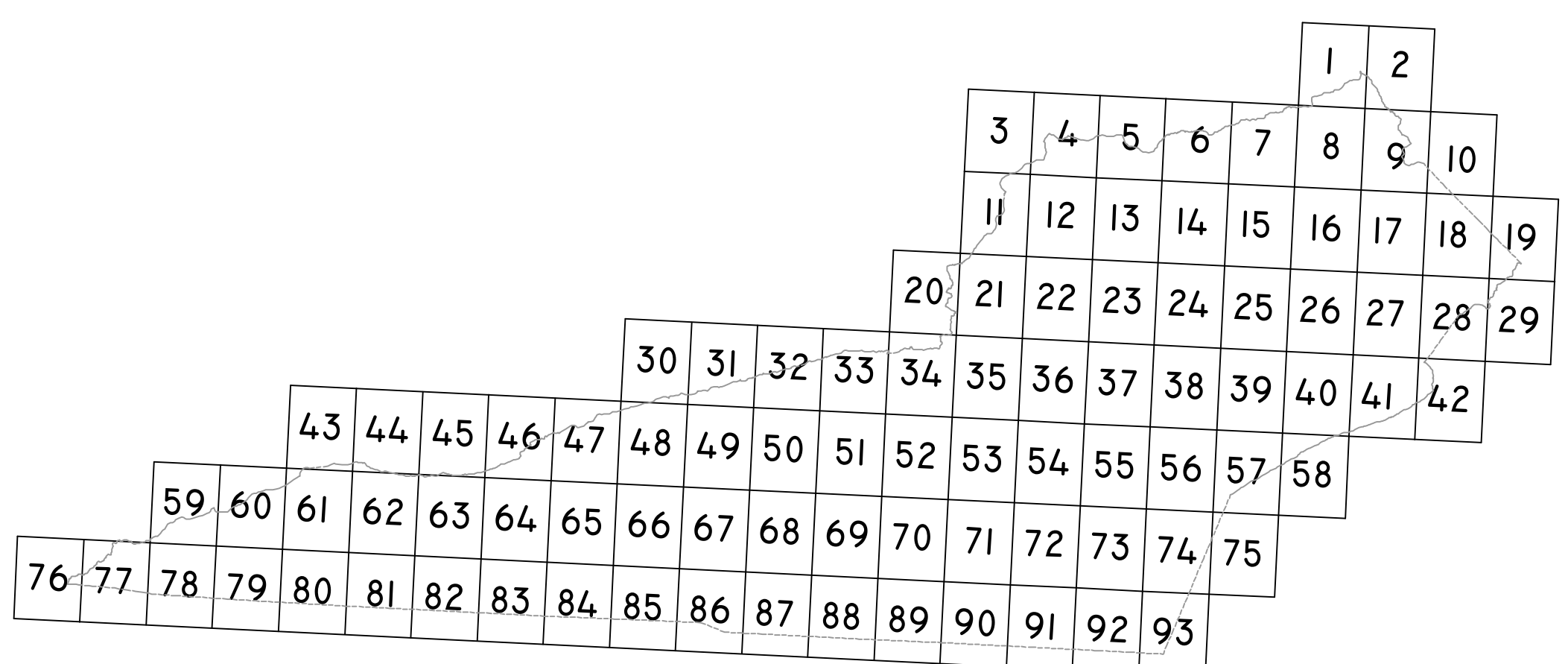


JONESVILLE
 MAGISTERIAL
 DISTRICT

SECTION 35
 INSERT F

DISCLAIMER:

THE INFORMATION SHOWN HEREON IS NOT BASED ON A CURRENT FIELD SURVEY. IT WAS COMPILED FROM PRIOR COUNTY TAX MAPS, SUBDIVISION PLATS, PARTITION PLATS, AERIAL PHOTOGRAPHY AND OTHER SOURCES. PLEASE NOTIFY THE LEE COUNTY COMMISSIONER OF THE REVENUE OFFICE IF ANY ERRORS OR OMMISIONS OCCUR. LEE COUNTY WILL NOT BE LIABLE FOR ANY DAMAGES, THAT MAY ARISE FROM THE USE OF THIS MAP. PROPERTY LINES AS SHOWN ARE SUBJECT TO A CURRENT FIELD SURVEY BY A CERTIFIED VIRGINIA LAND SURVEYOR. AERIAL IMAGERY © 2011 COMMONWEALTH OF VIRGINIA.



VICINITY MAP: 1"= 5 MILES

